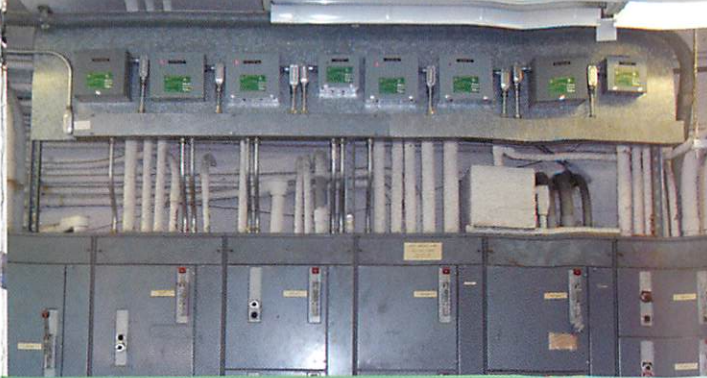


Installed KEC™ Unit

Optimizing refrigeration equipment



KEC™ Units installed on each motor control unit

The Problem


Up to 25% of the billable electricity consumed in homes and businesses is nonproductive and unusable.

“Over \$16 billion dollars of electricity is unusable energy, but billable in the U.S.”

U.S. Department of Energy

The Solution

KEC™ fine tunes electrical systems to reduce nonproductive and wasted electricity, giving you cost effective energy.



Green Energy Solutions
681 River Road, Yardley, PA 19067

Phone: 215.219.4900 website: www.Greenenergyaudits.com
Fax: 215.428.2563 email: Greenenergyaudits@comcast.net

www.kvar.com

Product Information:

Patents & Trademarks:

- U.S. Patent # 5,440,442 with U.S. Department of Energy Study (Sept. 1980 DOE/TIC 11339 Category UC38)
- KVAR Power Factor Optimization and Trademarks Registered with U.S. Government Patent Office

Approvals:

- Underwriters Laboratory Inc. Listed (UL28EP)
- Canadian Standards Association Listed (LR78409-1)
- ROHS Compliant
- Article 460 National Electrical Code Compliant

Warranty:

- Residential Applications - Twelve (12) Year Warranty on Workmanship and Product Defects
- Commercial Applications - Guaranteed for Five (5) Years from Date of Installation

Life Expectancy: Twenty (20) Years



Created by KVAR Energy Savings, Inc. 5/09

KEC-3 Rev2



“Reducing consumption by using patented power factor optimization.”

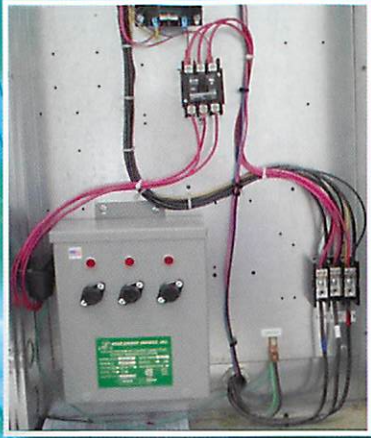


ELECTRIC ENERGY SAVER



Residential · Commercial · Industrial

Save money on your electric bill while helping to save the environment.



Installed KEC™ Unit

KVAR Energy Controller (KEC™) is an energy saving device that optimizes electrical motors and systems of industries, homes, and offices.

It helps significantly reduce electrical costs and pollution from energy generated by the utility companies.

KEC™ decreases demand at the meter by reducing lost and wasted power.

KEC™ Advantages

- ❖ Guaranteed savings
- ❖ Return on investment is rapid
- ❖ Reduces amperage surges
- ❖ Increases motor and appliance life
- ❖ Reduces harmful effects from electromagnetic fields and magnetizing current
- ❖ 5 year warranty - Commercial Applications
- ❖ 12 year warranty - Residential Applications

How KEC™ Works

KEC™ stores and releases what motors need to function more efficiently. KEC technology reclaims, stores, recycles and supplies power to inductive motors and loads.

KEC™ fine tunes electrical systems from inductive equipment back through the utility company's KVA electric meter, kilowatt hour (kWh) meter or demand meter. This fine tuning slows down the operation, thus reducing electrical consumption.

Savings are Immediate

KVAR customers see an average savings of 6% to 15%.

Installation is Quick

KEC™ can be installed indoors and outdoors at the main distribution panel or subpanel.

For larger three phase motors, the preferred location of KEC™ is at the motor's disconnect, which is installed after trained, certified electricians have performed an individual sizing of the respective motors.

Qualified electricians should perform all work.

KVAR Demonstration Kit



Installed KVAR PU-1200

